
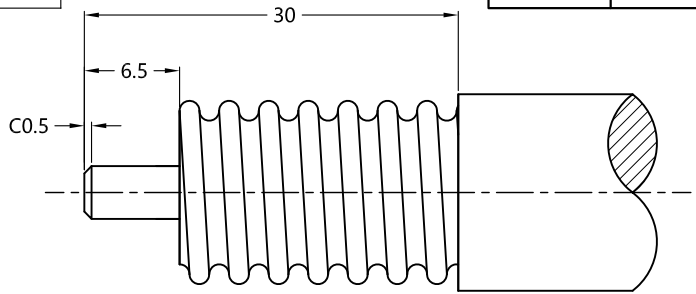
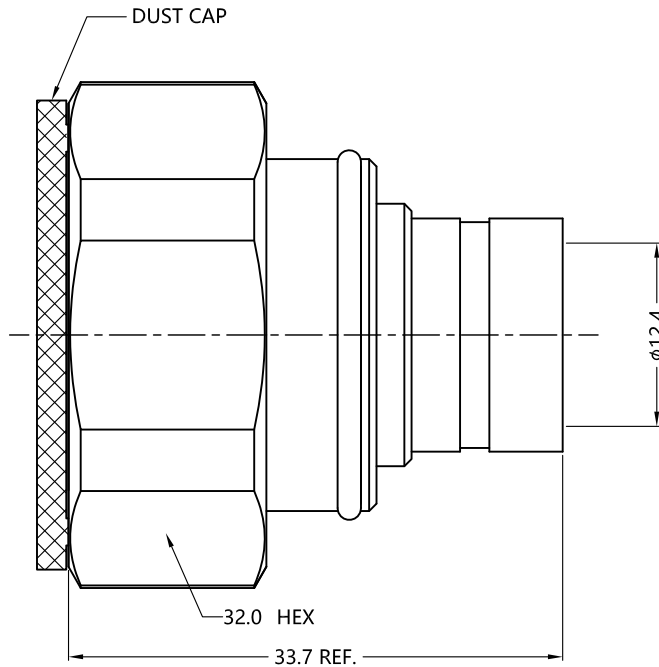
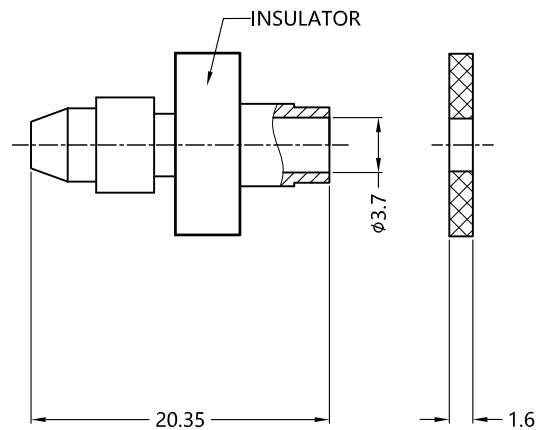


REV.	DESCRIPTION	ECN NO.	NAME	DATE	 ALL PARTS MUST MEET TO RoHS REQUIREMENTS
0	FIRST EDITION	N/A	WYJ	2016-07-27	
1	REPLACE FRAME	N/A	Kevin.Li	2020-09-14	

REMARKS:  
 1. ADDS SIZE:17.1mm  
 2. CONTACT PIN TO SOLDER



RECOMMENDED CABLE STRIPPING DIM'S



MATERIALS AND PLATING		UNIT: MICRO-INCHES
PART NAME	MATERIALS	PLATING
BODY/SHELL	BRASS	ALBALOY 80 u"/COPPER
INSULATOR	PTFE ASTM-D-1710	N/A
CONTACT PIN	BRASS	SILVER 200u"/COPPER
GASKET	SILICONE	RED
COVER	PE	BLUE

ELECTRICAL CHARACTERISTICS	
IMPEDANCE	50 Ω
VOLTAGE RATING	1000V(rms)
FREQUENCY RANGE	0 ~ 3 GHz
DIELECTRIC WITHSTANDING VOLTAGE	>2500 V
CONTACT RESISTANCE	CENTER CONTACT <0.4 mΩ
	OUTER CONTACT <1.5 mΩ
INSULATION RESISTANCE	>10000 MΩ
INSERTION LOSS	N/A
VSWR	< 1.25
3RD INTERMODULATION	≤-160 dBc@900MHz&1800MHz@2*43dBm

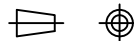
MECHANICAL CHARACTERISTICS	
FORCE TO ENGAGE AND DISENGAGE	N/A
CENTER CONTACT RETENTION FORCE	N/A
RECOMMENDED COUPLING TORQUE	177~265 in-lbs
COUPLING NUT RETENTION FORCE	> 225 lbs
DURABILITY	> 500cycles

ENVIRONMENTAL PARAMETER	
TEMPERATURE RANGE	-40°C- +125°C
THERMAL SHOCK	MIL- STD 202, Meth. 107,Cond. B
VIBRATION	MIL- STD 202, Meth. 204,Cond. A
CLIMATIC CLASS	IEC 60068 65/165/21

\* CUSTOMER OUTLINE DRAWING

UNLESS OTHERWISE SPECIFIED:  
 1) EDGES : C0.15 MAX ;  
 2) REMOVE ALL BURRS ;  
 3) SURFACE ROUGHNESS : Ra1.6 ;  
 4) UNITS : mm ;  
 5) DIMENSIONS TOLERANCES  
 DECIMALS : .x ±0.3 .xx ±0.2 .xxx±0.1;  
 ANGLES : ± 5°.

THIRD ANGLE PROJECTION



APPROVED :

CUSTOMER P/N :

CHECKED :

SCALE :

DRAWING :

DATE : 2020-09-14

PAGE : 1/1



TITLE : 7/16 MALE S/T SOLDER FOR 1/2" S/F CORRUGATED CABLE,50Ω

DRAWING NO. :

5A7M15S-LS12-002

COMPANY WEBSITE : www.slkcorp.com

CUSTOMER OUTLINE DRAWING