
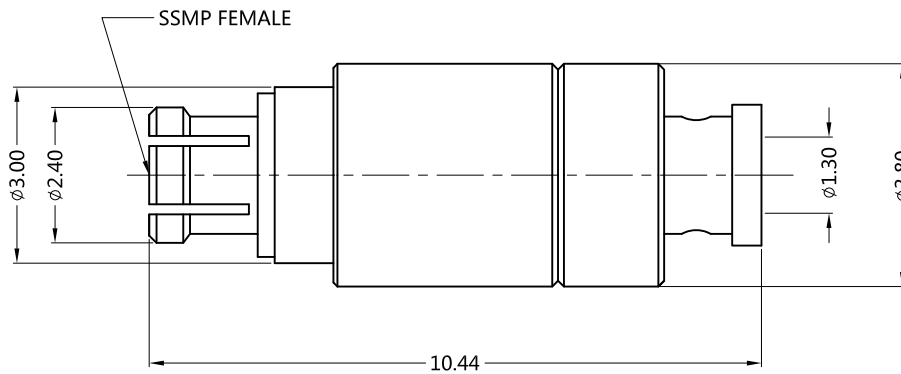
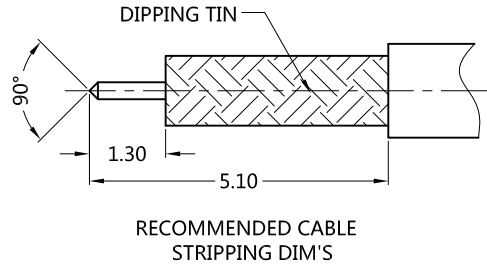


REV.	DESCRIPTION	ECN NO.	NAME	DATE	 ALL PARTS MUST MEET TO RoHS REQUIREMENTS
0	FIRST EDITION	N/A	YWD	2018-08-08	
1	NEW FRAME	N/A	LEI CHAO	2020-07-13	

REMARKS:  
 1. CONTACT PIN TO CAPTIVE  
 2. FERRULE TO SOLDER



MATERIALS AND PLATING		UNIT: MICRO-INCHES
PART NAME	MATERIALS	PLATING
BODY	Be-Cu	GOLD 10 u"/NICKEL/COPPER
CONTACT PIN	Be-Cu	GOLD 50 u"/NICKEL/COPPER
INSULATOR	PEEK	N/A
BARREL	BRASS	GOLD 10 u" /NICKEL/COPPER

ELECTRICAL CHARACTERISTICS		
IMPEDANCE	50 Ω	
VOLTAGE RATING	180 V(rms)	
FREQUENCY RANGE	DC ~ 40 GHz	
DIELECTRIC WITHSTANDING VOLTAGE	>325 V	
CONTACT RESISTANCE	CENTER CONTACT	<6.0 mΩ
	OUTER CONTACT	<2.0 mΩ
INSULATION RESISTANCE	>1000 MΩ	
INSERTION LOSS	N/A	
VSWR	<1.1+0.01F(GHz)	
3RD INTERMODULATION	N/A	

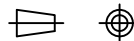
MECHANICAL CHARACTERISTICS		
ENGAGEMENT FORCE	FULL DETENT	<4.5lbs
	SMOOTH BORE	<2.5lbs
SEPARATION FORCE	FULL DETENT	>6.5 lbs
	SMOOTH BORE	>1.5 lbs
CENTER CONTACT RETENTION FORCE		> 3 lbs
COUPLING NUT RETENTION FORCE		N/A
DURABILITY	> 100 cycles (FD)	
	> 500 cycles (SB)	

ENVIRONMENTAL PARAMETER	
TEMPERATURE RANGE	-40 °C~+125 °C

**\* CUSTOMER OUTLINE DRAWING**

UNLESS OTHERWISE SPECIFIED:  
 1) EDGES : C0.15 MAX ;  
 2) REMOVE ALL BURRS ;  
 3) SURFACE ROUGHNESS : Ra1.6 ;  
 4) UNITS : mm ;  
 5) DIMENSIONS TOLERANCES  
 DECIMALS : .x ±0.3 .xx ±0.2 .xxx±0.1;  
 ANGLES : ± 5°.

THIRD ANGLE PROJECTION



APPROVED :

CUSTOMER P/N :

CHECKED :

SCALE :

6 : 1

DRAWING :

DATE : 2020-07-13

PAGE : 1/1



TITLE : SSMP FEMALE S/T SOLDER FOR .047" CABLE ,50 Ω

DRAWING NO. :

5MPF15S-S04

COMPANY WEBSITE : www.slkcorp.com

CUSTOMER OUTLINE DRAWING